

DriveCon® PlastiRok™

WaterPave is the industry leader and innovator in Permeable or Pervious concrete for the construction industry.

WaterPave's patented Permeable concrete product DriveCon® has now been engineered to include the use of recycled "single use" soft plastic, producing Australia's first environmentally friendly Permeable concrete paving system. Like our conventional DriveCon® system, PlastiRok™ has been engineered to carry pedestrian and vehicle loads, while absorbing rain water which reduces the effects of flooding and recharges the soil below, satisfy local council permeability requirements.

Combining state of the art Australian plastic recycling technology and our patented admixtures WaterPave can now use 95% post-consumer soft plastics that are recovered from a major recycle program here in Australia. All recycled plastic used in our DriveCon® PlastiRok™ product comes from Australia's own waste. No international waste products are used.

The innovative technology turns post consumer soft plastic into what looks like mined aggregate and behaves very similar to that of traditional mined aggregate once combined with cement. This enables WaterPave to replace a percentage of mined aggregate with PlastiRok™ without compromising the strength, water absorbing rates and its long term performance.



Usage

Our standard design for our DriveCon® PlastiRok™ Permeable concrete product contains 22,000 pieces of "single use" soft plastics per cubic meter which would otherwise end up in our landfill. The inclusion of PlastiRok™ can be increased up to 50% equating to over 110,000 "single use" soft plastic bags saved from land fill per cubic meter.

Applications

- Council footpath
- Commercial footpaths
- Driveways
- Carparks

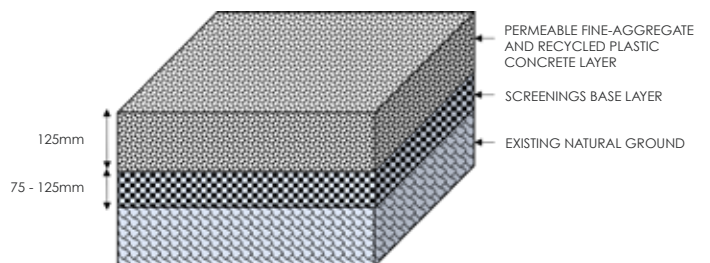


Advantages

- 95% post-consumer plastics
- 3 times lighter than mineral aggregate
- Lower thermal mass
- Less wear and tear on equipment
- Reduced transportation and installation

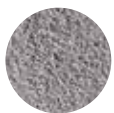
Technical Information

- Infiltration rates exceeding 30,000 mm/hr, which is more than twice the industry standard.
- Complies with Australian Standard AS 4586:2013 for Slip Resistance with a Classification of P5.
- At 125mm thick, General Mass Limits (GML) of up to 10 tonne can be carried.



Colour Range

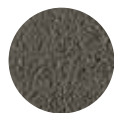
While care is taken to correctly represent the final installed product, specifications and colours may vary without notice. Other colours are available upon request.



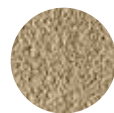
Natural



BLUESTONE
oxide



CHARCOAL
oxide



SOAPSTONE
oxide



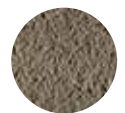
SANDSTONE
oxide



PEPPERCORN
oxide



PAPYRUS
oxide



RAVINE
oxide

Maintenance

WaterPave offers a full maintenance programme to keep its Permeable paving system performing at its optimum flow rates all year 'round.